



POLYESTER

Based on P510 Yori fabric

Colour Card 2023

6610 paloma <i>NEW</i>	6410 cameo <i>NEW</i>	*3211 banana <i>NEW</i>	*8613 fluo flamingo <i>NEW</i>	8015 water lilies <i>NEW</i>	*11017 verbona <i>NEW</i>	16616 veronique <i>NEW</i>	17016 mediterraneo <i>NEW</i>	*1011 acid yellow
6510 linen <i>NEW</i>	6812 pink marble <i>NEW</i>	*3611 dandelion <i>NEW</i>	8413 petal <i>NEW</i>	7515 lavender	*5417 irish green	15516 baby blue <i>NEW</i>	8616 cobalt <i>NEW</i>	*10517 clover
2918 shabby chic <i>NEW</i>	8213 belle epoque <i>NEW</i>	*3511 pollen <i>NEW</i>	8713 heron <i>NEW</i>	*7615 lilac	10717 deep teal	*11117 eyeblush <i>NEW</i>	17216 diplomatique <i>NEW</i>	*1114 psycho red
3018 nutmeg <i>NEW</i>	4914 dahlia <i>NEW</i>	*3311 sunrise <i>NEW</i>	*7913 pinky <i>NEW</i>	*8415 desire <i>NEW</i>	16116 outer space	*16416 caribe <i>NEW</i>	16716 shibori <i>NEW</i>	*2313 shocking pink
3118 brick <i>NEW</i>	8115 mangosteen <i>NEW</i>	*6712 papaya <i>NEW</i>	*2413 neon pink <i>NEW</i>	7715 purple wine	16516 grand prix <i>NEW</i>	16316 imperial blue <i>NEW</i>	15416 dark blue <i>NEW</i>	*2513 fuchsia fever
3411 mustard <i>NEW</i>	7915 mulberry <i>NEW</i>	*6912 sunset <i>NEW</i>	*8513 cremisi <i>NEW</i>	7815 violetta	15816 cerulean	16816 savoy <i>NEW</i>	8819 squalo <i>NEW</i>	*6213 coral bliss <i>NEW</i>
11317 muddy <i>NEW</i>	8315 satin <i>NEW</i>	2314 cherry red	*8013 beach party <i>NEW</i>	8215 fluorite <i>NEW</i>	11217 ocean ground <i>NEW</i>	16016 peacock <i>NEW</i>	9619 caucciù <i>NEW</i>	*2012 orange pop
10417 seaweed	3218 lanzarote <i>NEW</i>	5014 inca red <i>NEW</i>	8313 cyclamen <i>NEW</i>	16916 opera <i>NEW</i>	10917 cactus blue <i>NEW</i>	17116 azulejos <i>NEW</i>	8719 fossil	*1912 bright orange <i>NEW</i>
								6710 white 6810 PFP
								9719 black

* Fluorescent Colours

Polyester

P510 YORI

Applications > Swimwear > Beachwear

Composition		
Polyester	Elastane	
82%	18%	
Weight (±5%)		
190 g/m²	285 g/m lin.	150 cm
Courses	Wales	Tolerance for composition (standard ASTM)
45/cm	26/cm	±3%
Dimensional Change of fabric after HL ASTC 135-2015 (1 wash, normal cycle at 41 degree Celsius line dry)		
	Max	Max
	-5%	-5%
	Width	Length
Resistance to pilling ASTM D 3512-Randden tumble at 30 minutes photographic rating		
	4.5	
Ultraviolet Protection Factor (U.P.F.) ASTC 183-2010		
	50+	
Stretch to dynamometer (±15%) ASTM D 4964 - LOAD 20 Lbs		
	120%	170%
	Width	Length
	(min 102% - max 138%)	(min 145% - max 190%)
Modulus % elongation (30% - 50% - 70%)		
	30% 50% 70%	30% 50% 70%
	0.2-0.8	0.0-1.8
	Width Lbs	Length Lbs
Care labelling codes		

high chlorine resistance	breathable	two way stretch	perfect fit	UV protection
--------------------------	------------	-----------------	-------------	---------------

PLEASE PAY SPECIAL ATTENTION to the fastness values declared in the chart. Combination of colours is not recommended when the fastness values of Washing, Water and Sea Water are lower than 4-5.



 Polyester

P510 YORI



9719 black



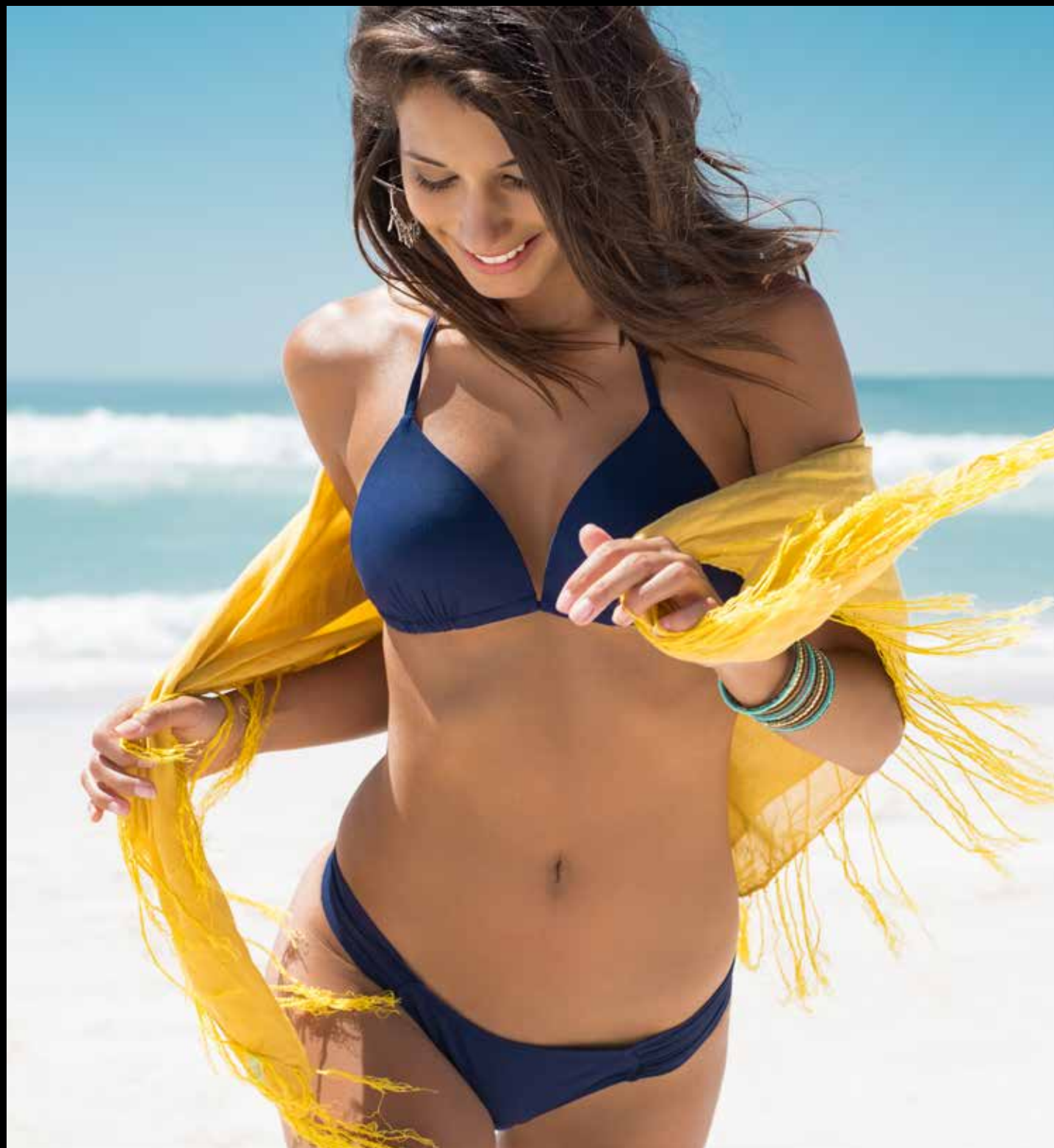
**2413 neon pink*



6710 white - 6810 white PFP



10717 deep teal



P510 YORI

Applications

> Swimwear > Beachwear

Yori is our signature polyester charmeuse fabric, which combines good stretch, natural wicking properties and high color fastness resistance to light and chlorinated water, for all colors. It is a very flexible choice, suitable for any kind of kids and adults garments, such as swimwear, rash-guard and light activewear.



Composition			
Polyester	Elastane		
82%	18%		
Weight (±5%)	Width (+3%/-2%)		
190 g/m²	285 g/m lin.	150 cm	
Courses	Wales	Tolerance for composition (standard ASTM)	
45/cm	26/cm	±3%	
Dimensional Change of fabric after HL AATCC 135-2015 (1 wash, normal cycle at 41 degree Celsius line dry)	Max	Max	
	-5%	-5%	
	Width	Length	
Resistance to pilling ASTM D 3512-Random tumble at 30 minutes photographic rating STD	4.5		
Ultraviolet Protection Factor (U.P.F.) AATCC 183-2010	50+		
Stretch to dynamometer (±15%) ASTM D 4964 - LOAD 20 LBS	120%	170%	
	Width	Length	
	(min 102% - max 138%)	(min 145% - max 196%)	
Modulus % elongation (30% - 50% - 70%)	30%	50%	70%
	0.2-0.8	0.0-1.6	1.6-3.4
	Width Lbs	Length Lbs	
Care labelling codes			

AATCC Standards

COLOUR	CHLORINATED WATER AATCC 162	LIGHT AATCC 16-20 AFU	WATER 38°C AATCC 107							SEA WATER 38°C AATCC 106							PERSPIRATION AATCC 15							CROCKING AATCC 8		WASHING 49°C AATCC 61-2A						
	C.C.	C.C.	C.C.	AC	CO	PA	PL	PC	WO	C.C.	AC	CO	PA	PL	PC	WO	C.C.	AC	CO	PA	PL	PC	WO	S.CO DRY	S.CO WET	C.C.	AC	CO	PA	PL	PC	WO
6710	3.5	3.5	5	5	5	5	5	5	5	5	5	5	5	5	5	5	5	5	5	5	5	5	5	5	5	5	5	5	5	5	5	5
6810	3.5	3.5	5	5	5	5	5	5	5	5	5	5	5	5	5	5	5	5	5	5	5	5	5	5	5	5	5	5	5	5	5	
*2413	4.5	3.5 ¹	4.5	4	4.5	4	4.5	4.5	4.5	4	4.5	4	4.5	4.5	4.5	4.5	4.5	4.5	4.5	4.5	4.5	4.5	4.5	3.5	4	4.5	3.5	4	3	4	4.5	4
10717	4	4.5	4.5	4	4.5	4	4.5	4.5	4	4.5	4	4.5	4	4.5	4.5	4	4.5	4.5	4.5	4.5	4.5	4.5	4	4	4.5	4	4.5	3.5	4	4.5	4	
9719	4.5	4.5	4.5	3	4	3	4	4.5	3.5	4.5	3	4	3	4	4.5	3.5	4.5	4	4.5	4	4.5	4.5	4	3.5	4	4.5	3.5	4	3	3.5	4.5	3.5

¹ Fluorescent Colours - CF TO LIGHT AATCC 16-10 AFU

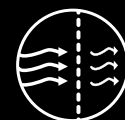
ISO Standards

COLOUR	CHLORINATED WATER ISO 105-E03	LIGHT ISO 105-B02	WATER ISO 105-E01				SEA WATER ISO 105-E02			ALKALINE PERSPIRATION PH 8.0 ISO 105-E04			ACID PERSPIRATION PH 5.5 ISO 105-E04			CROCKING ISO 105-X12		WASHING 40°C ISO 105-C06 A2S		
	C.C. 50 mg/l	C.C.	C.C.	CO	PA	C.C.	CO	PA	C.C.	CO	PA	C.C.	CO	PA	S.CO DRY	S.CO WET	C.C.	CO	PA	
6710	3	3	5	5	5	5	5	5	5	5	5	5	5	5	5	5	5	5	5	
6810	3	3	5	5	5	5	5	5	5	5	5	5	5	5	5	5	5	5	5	
*2413	3-4	3	4-5	4-5	4	4-5	4-5	4	4-5	4-5	4	4-5	4-5	4	4-5	4	4-5	4-5	3-4	
10717	4	4-5	4-5	4-5	4-5	4-5	4-5	4-5	4-5	4-5	4-5	4-5	4-5	4-5	4	4	4-5	4-5	4	
9719	4-5	4-5	4-5	4-5	3-4	4-5	4-5	3-4	4-5	4-5	3-4	4-5	4-5	3-4	4-5	4	4-5	4-5	3-4	

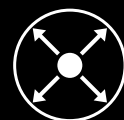
P510 YORI



high chlorine resistance



breathable



two way stretch



perfect fit



UV protection



Hung Yen Knitting & Dyeing Co. Ltd

Available colors: all colors displayed in the main Polyester color card are available for sampling on this item. Please refer to the main color card for the color fastness performance of each color. You can place bulk orders with MCQ 70 mts in any shade of our collection.

Special notes/warnings: we recommend carrying out lab tests for color matches, molding, bonding and applications on fabrics in order to prevent problems from arising during garments production. Please carefully check physical data and color fastness forecasts.